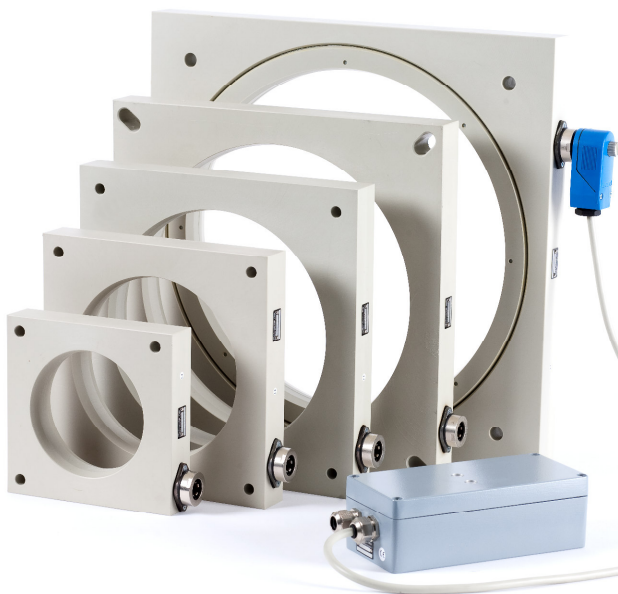


# Inductive Loop Sensors IRV / IRT

For Contact-Free Detection of Metallic, Especially Bar Shaped Materials (Tubes, Profiles, etc.)



- Typical application areas:
  - tube processing machines (straightening machines, cold pilger mills, etc.)
  - tube feeding by use of mandrel bars
- circular sensor area, implemented by a very rugged exploring coil
- response sensitivity mostly the same in the whole sensor area
- automatic adjustment by use of control unit IRV20:
  - automatic compensation of the influence of environmental metallic material
  - automatic configuration of the optimum response sensitivity, related to the depth of immersion of the material into the exploring coil
- exploring coil available in various dimensions
- protection category IP65

## Selection of available exploring coils



Model	Free diameter	Dimensions
IRT 25	25mm	90mm x 97mm
IRT 40	40mm	100mm x 106mm
IRT 50	50mm	100mm x 112mm
IRT 60	60mm	120mm x 120mm
IRT 75	75mm	135mm x 135mm
IRT 100	100mm	150mm x 153mm
IRT 150	150mm	210mm x 210mm
IRT 200	200mm	260mm x 260mm
IRT 250	250mm	310mm x 310mm
IRT 300	300mm	380mm x 380mm

### OPTRONIC AG

Unteregger Strasse 53, Postfach 178  
CH-9403 Goldach, SWITZERLAND

Phone: +41 (0)71 844 02 00  
Fax: +41 (0)71 844 02 10

E-mail: [sales@optronic.ch](mailto:sales@optronic.ch)  
Internet: [www.optronic.ch](http://www.optronic.ch)